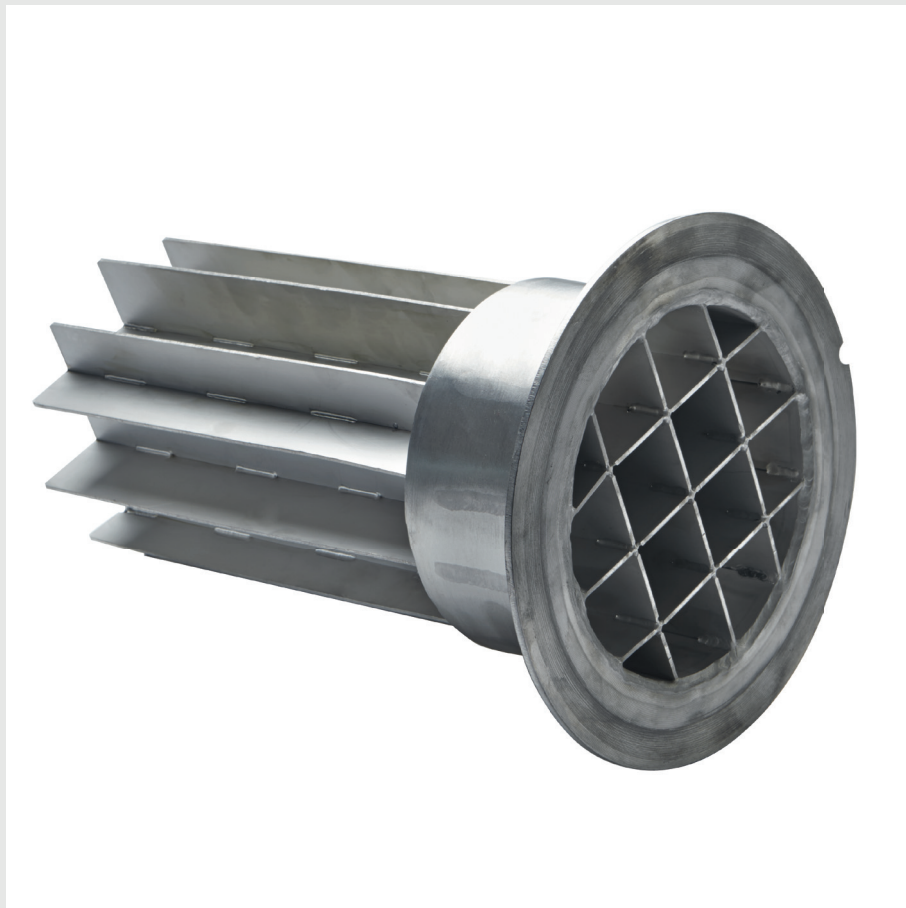


## FCS Series Flow Conditioner



## FCS Series - Ordering Codes

Flow Conditioners are required for custody transfer and/or when the piping configuration does not permit the installation of long metering runs.

M&T's flow conditioners (FCS series) are designed to ensure constant flow meter performance. Inserted at the upstream end of a 7D upstream spool they have a "top hat" fixing design which minimises the risk of any materials breaking free and causing downstream damage.

The design is more efficient than a tube bundle design for the elimination of swirl while having a much lower pressure drop.

The chart below can be used to select the correct flow conditioner for your application (if required).

FCS		FCS		Product Line				
↓	03	3"/DN80		↓	Flow Conditioner Size			
	04	4"/DN100						
	06	6"/DN150						
	08	8"/DN200						
	10	10"/DN250						
	12	12"/DN300						
	16	16"/DN400						
	↓	A	150# ANSI RF Flanges			↓	Pressure Class	
B		300# ANSI RF Flanges						
C		600# ANSI RF Flanges						
D		Other (please contact us)						
↓		BODY		FLANGES		↓	Spool Piece Construction Materials	
	1	CS A106		CS A105				
	2	LTCS A333 Gr6		LTCS A350 LF2				
	3	SS 316L		SS 316L				
	4	Other		Other				
	↓	1	SS 304 (Standard)				↓	Flow Straightening Vane Material
		2	SS 316 L (Optional)					
		O	Other (please contact us)					
	↓	AC	Cross plate, removable top hat (Standard)				↓	Vane Type and Mounting
		O	Other (please contact us)					
	↓	1	7 Diameter long (Standard)				↓	Flow Conditioner Length
		2	10 Diameter long (Optional)					
		3	Specific					
	↓	1	2 Diameter long (Standard)				↓	Flow Straightening Vane Length
		O	Other (please contact us)					
	↓		↓		↓		↓	
FCS	10	A	1	1	AC	1	1	
							Example Product Code	

